



Ministerio de Ciencia,
Tecnología e Innovación Productiva
Presidencia de la Nación

PROYECTO
PAIS

CONICET

AGENCIA
NACIONAL DE PROMOCIÓN
CIENTÍFICA Y TECNOLÓGICA

PAIS project: Argentine SARS-CoV-2 Genomics Consortium “Evolutionary analyses”

Carolina Torres

*Universidad de Buenos Aires, Facultad de Farmacia y Bioquímica, Instituto de
Investigaciones en Bacteriología y Virología Molecular (IBaViM).*

Consejo Nacional de Investigaciones Científicas y Técnicas (CONICET).



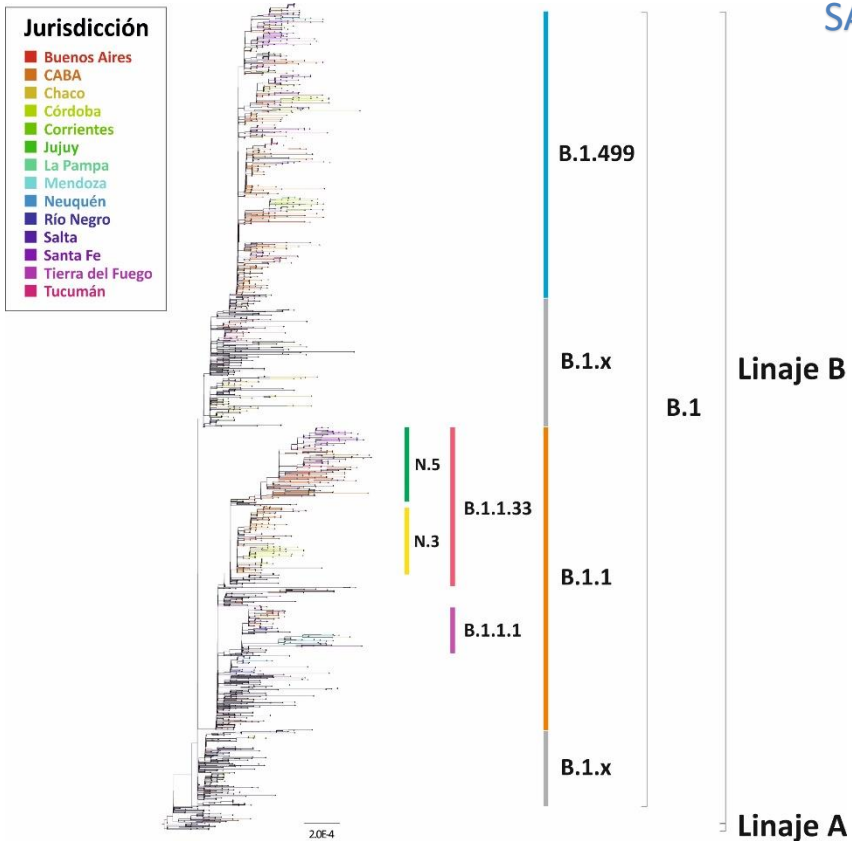
caro.torr@gmail.com



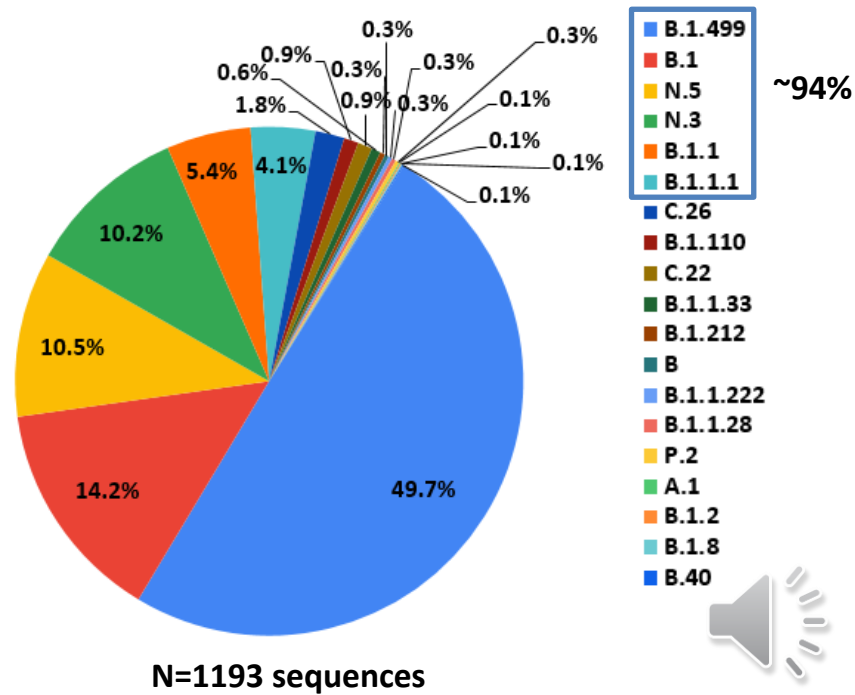
@CaroTorr



Phylogenetic analyses: confirmation of lineage assignment

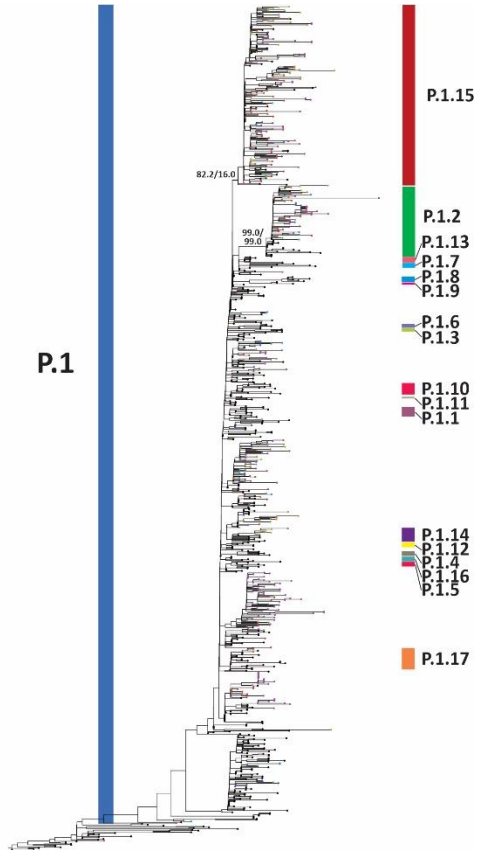


SARS-CoV-2 Argentine lineages distribution: first wave

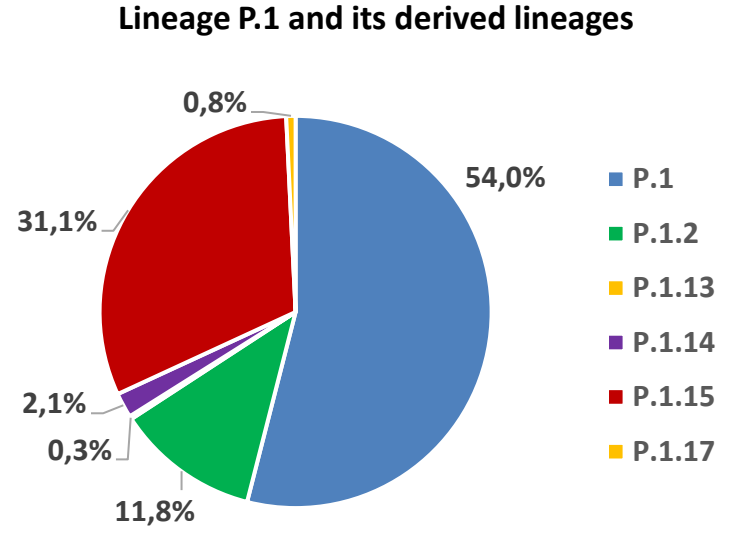


Phylogenetic analyses: confirmation of lineage assignment

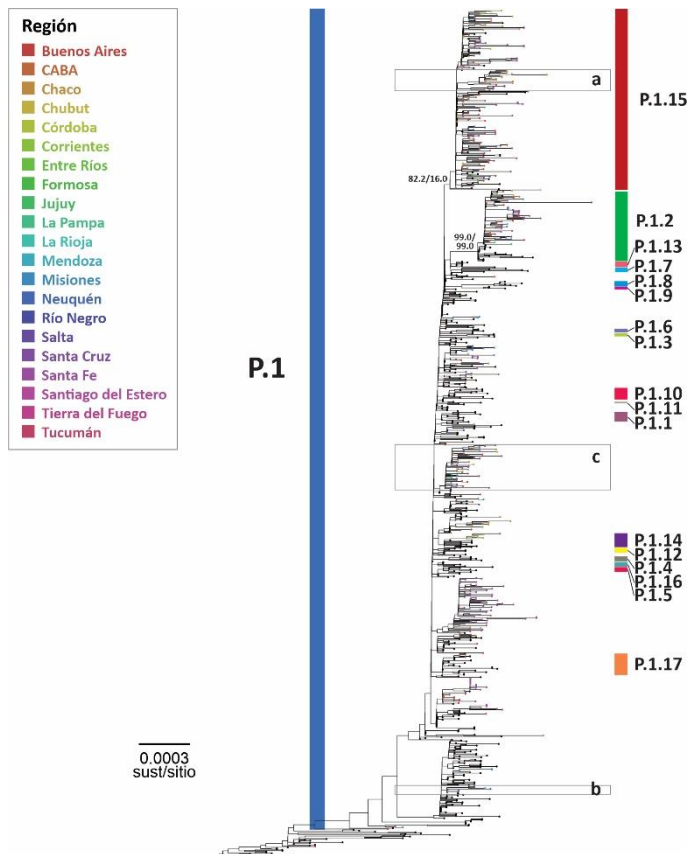
- Región**
- Buenos Aires
 - CABA
 - Chaco
 - Chubut
 - Córdoba
 - Corrientes
 - Entre Ríos
 - Formosa
 - Jujuy
 - La Pampa
 - La Rioja
 - Mendoza
 - Misiones
 - Neuquén
 - Río Negro
 - Salta
 - Santa Cruz
 - Santa Fe
 - Santiago del Estero
 - Tierra del Fuego
 - Tucumán



GAMMA

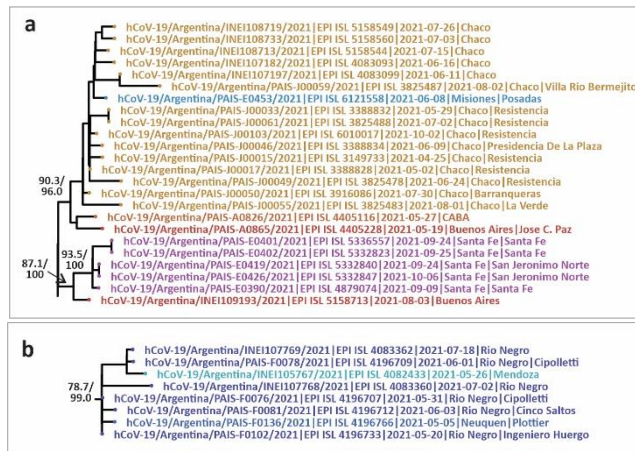


Phylogenetic analyses: introduction and transmission chains

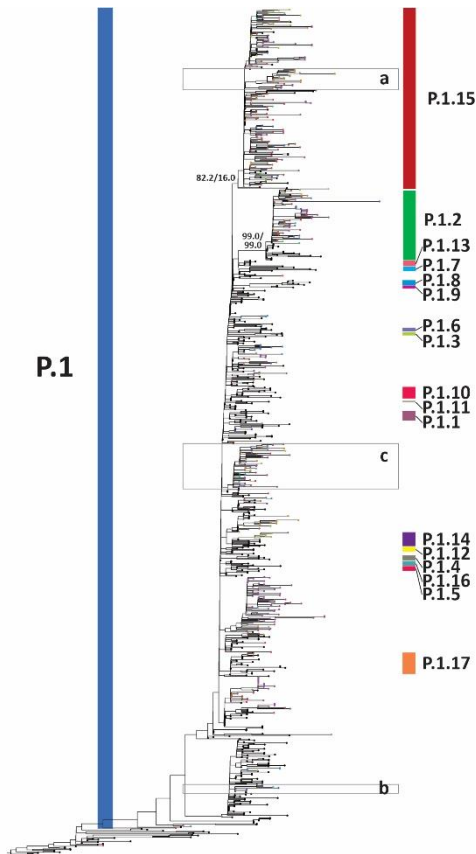
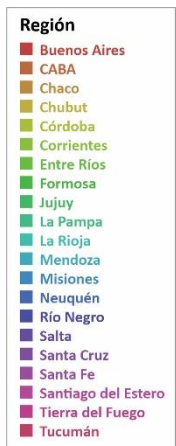


GAMMA

- Multiple introductions and clusters of Argentine sequences with no epidemiological link were observed, indicating introduction, establishment, and local transmission.
- Monophyletic groups were observed, suggesting transmission chains circumscribed to one or a few areas, dispersed regionally or between distant provinces:

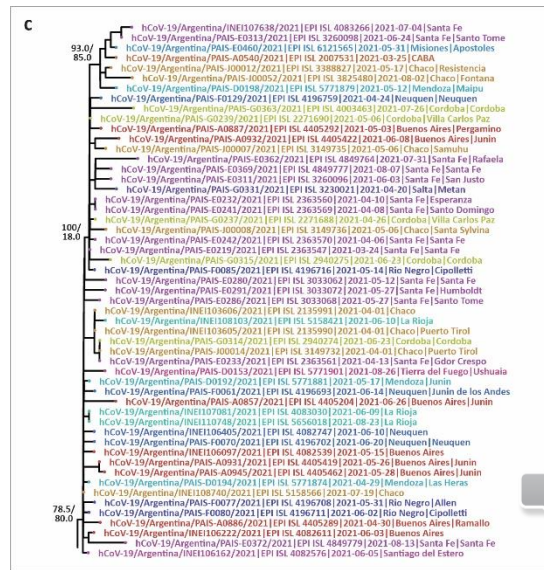


Phylogenetic analyses: introduction and transmission chains

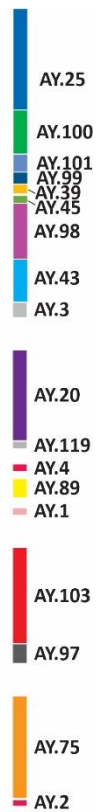
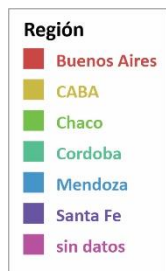


GAMMA

- Multiple introductions and clusters of Argentine sequences with no epidemiological link were observed, indicating introduction, establishment, and local transmission.
- Monophyletic groups were observed, suggesting transmission chains circumscribed to one or a few areas, dispersed regionally or between distant provinces:

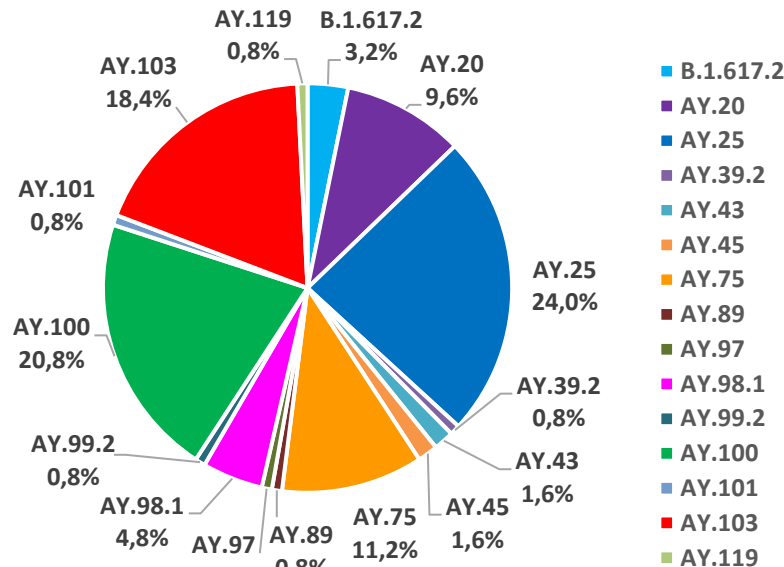


Phylogenetic analyses: confirmation of lineage assignment

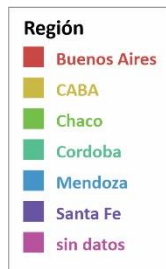


DELTA

Lineage B.1.617.2 and its derived lineages

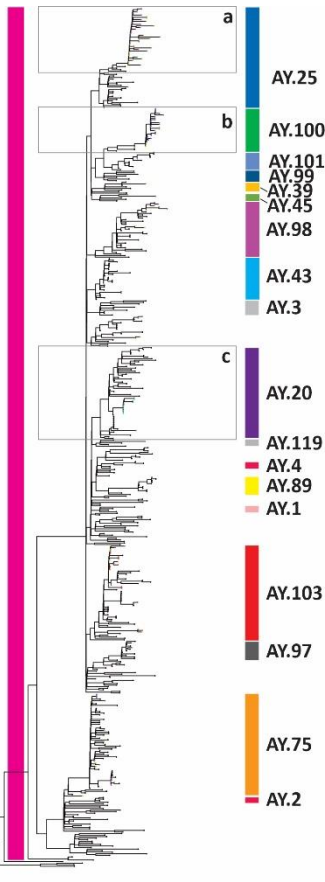


Phylogenetic analyses: introduction and transmission chains



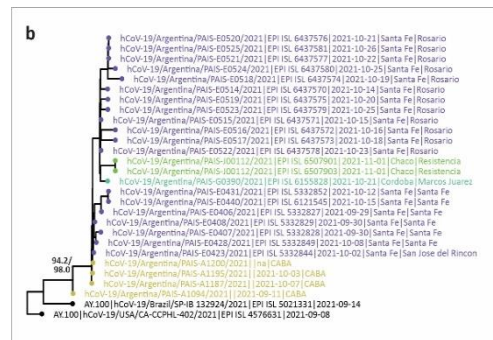
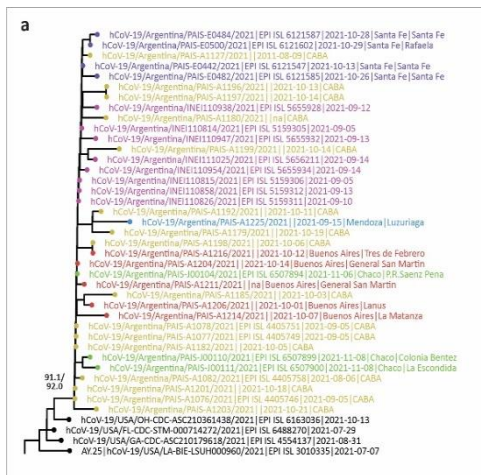
B.1.617.2

0.0002
sust/sitio

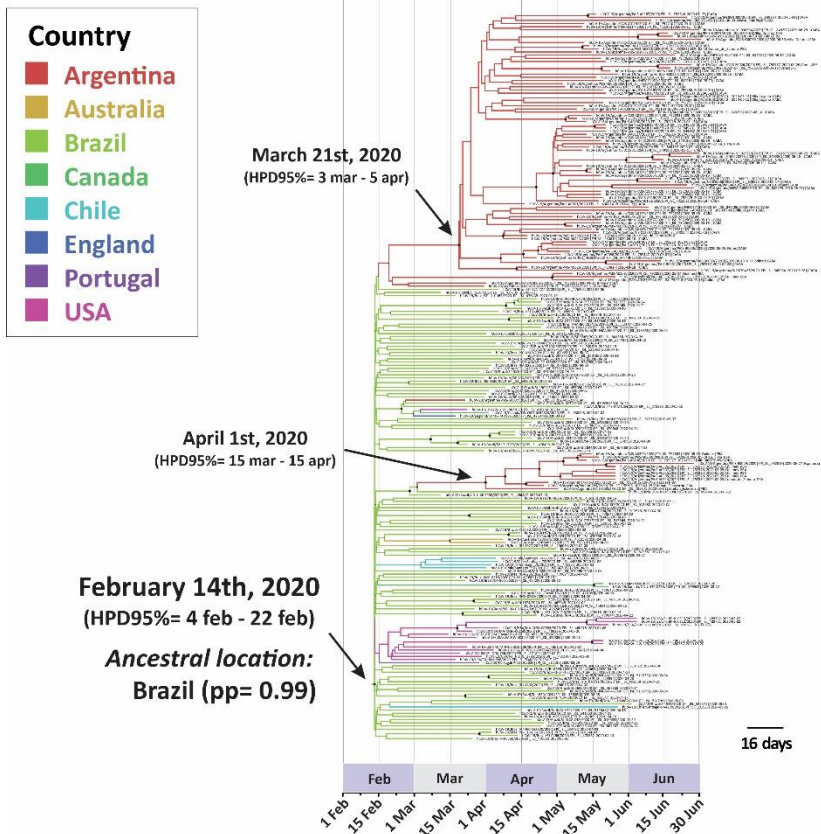


DELTA

- As for other variants, multiple introductions and groupings of Argentine sequences with no epidemiological link were observed, indicating introduction, establishment, and local transmission.
- Groups were observed suggesting transmission chains circumscribed to one or a few areas, dispersed regionally or between distant provinces:



B.1.1.33 and its derived lineages

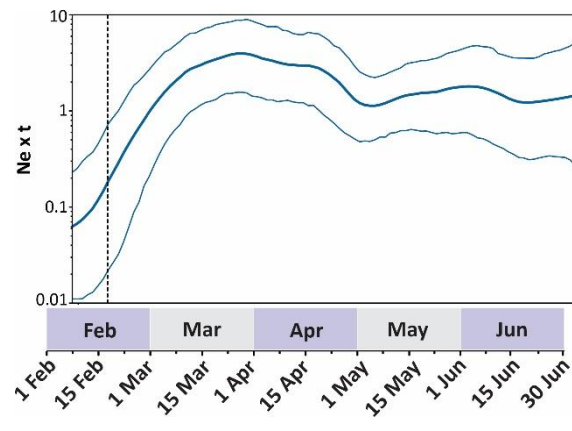


N.3

Evolutionary rate= 6.0×10^{-4} (s/s/y)
(HPD95%= $4.8 \times 10^{-4} - 7.2 \times 10^{-4}$)

~ 18 subs/year

Demographic reconstruction





<http://pais.gb.fcen.uba.ar>



argentinaprojectopais@gmail.com

@ProyectoPAIS4

Thank you!!